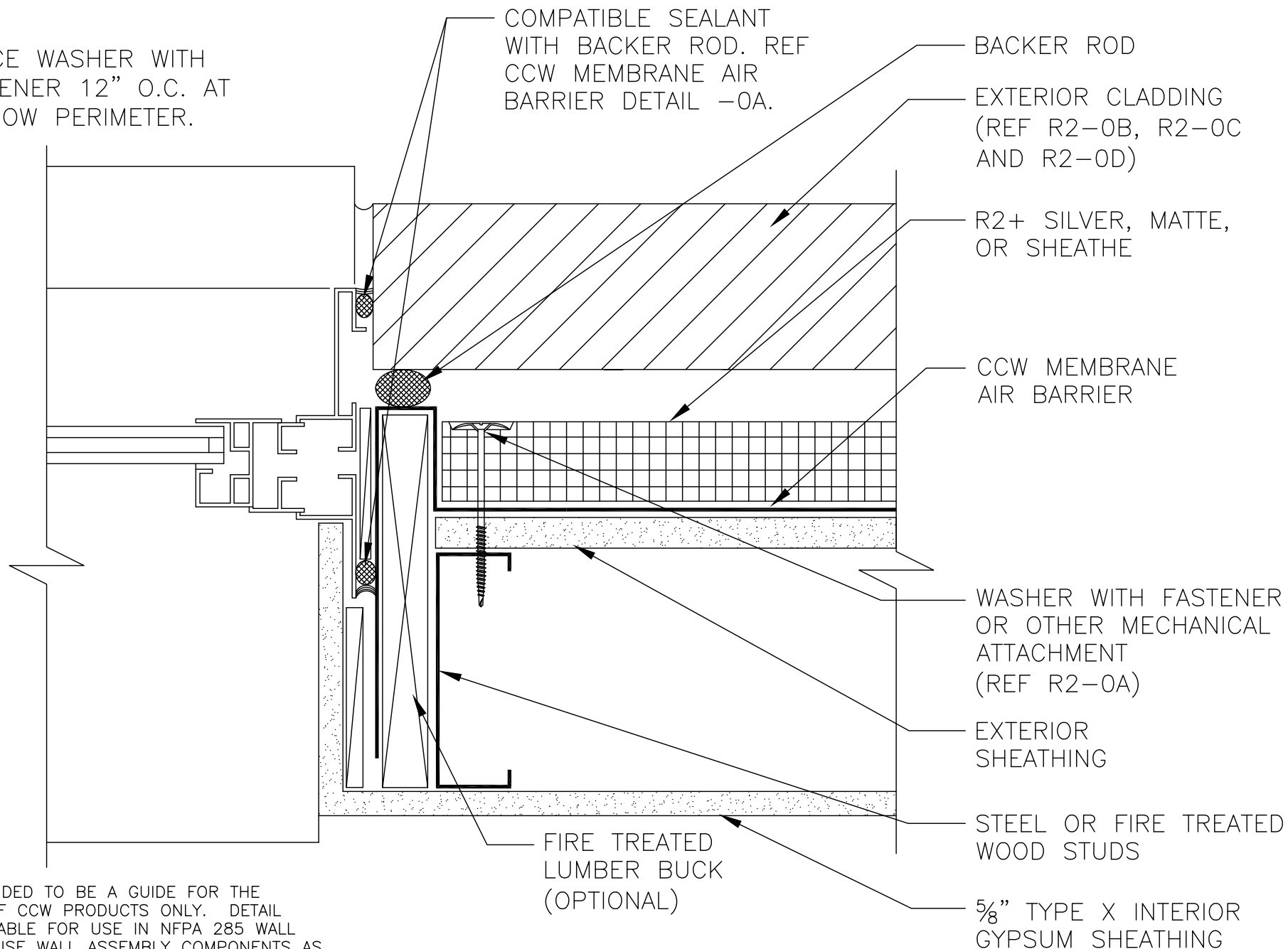


NOTES:

1. SPACE WASHER WITH FASTENER 12" O.C. AT WINDOW PERIMETER.



DETAIL IS INTENDED TO BE A GUIDE FOR THE INSTALLATION OF CCW PRODUCTS ONLY. DETAIL SHOWN IS SUITABLE FOR USE IN NFPA 285 WALL ASSEMBLIES. USE WALL ASSEMBLY COMPONENTS AS LISTED IN R2-0B, R2-0C AND R2-0D DETAILS.

R2-5B

POLYISO INSULATION  
PUNCHED WINDOW - JAMB