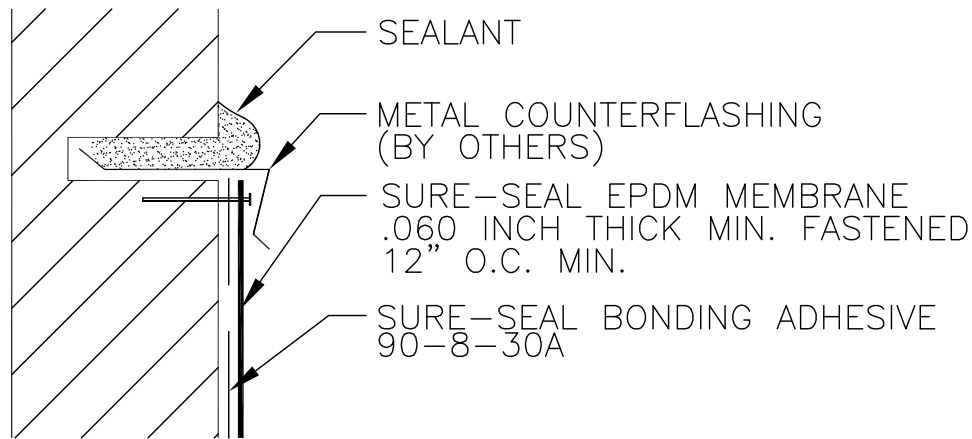


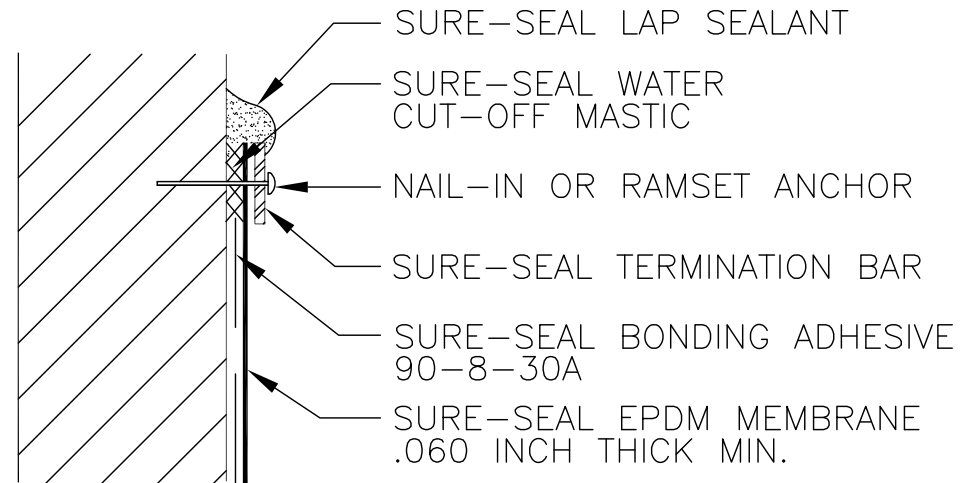
EPDM-9-C COUNTERFLASHING



NOTES:

1. IF FASTENERS PENETRATES METAL COUNTERFLASHING, USE NEOPRENE WASHER, OR APPLY CAULK OVER FASTENER HEAD.
2. FASTEN METAL COUNTERFLASHING TO SUBSTRATE 12" ON CENTER MINIMUM.

EPDM-9-D MECHANICAL



NOTES:

1. APPLY ON HARD SMOOTH SURFACE ONLY.
2. WATER CUT-OFF MASTIC MUST BE HELD UNDER CONSTANT COMPRESSION.

DETAIL IS INTENDED TO BE A GUIDE FOR
WATERPROOFING INSTALLATION ONLY.

EPDM-9CD

VERTICAL TERMINATION

CARLISLE
COATINGS & WATERPROOFING

© 2013 CARLISLE CORPORATION